

PLASTIC BELT CONVEYOR QUOTATION WORKSHEET

Company _____ Date _____
 Contact _____ Quote Due _____ Desired Delivery _____
 Phone No.: _____ Contact Email: _____ State _____
 Sales Contact: _____ Quote #: _____
 Quantity: _____

Product Specs:

Max:
 - Width (inches): _____ Length (inches): _____
 - Height (inches): _____ Weight (lbs): _____
Min:
 - Width (inches): _____ Length (inches): _____
 - Height (inches): _____ Weight (lbs): _____
 Description: _____
 Max. Qty.: _____ Total Live Load*: _____
Temperature
 -Environment: _____
 -Product: _____
 Wet Dry Other _____

Conveyor Construction:

- Welded
 Painted Epoxy Painted
 Powder Coated Color RAL: _____
 Stainless Steel
 Mill Finish Polished
 Bolt-Together Galvanized
 Bed Type: Slider Bed Open Style Slider Bed

Conveyor Orientation:

- Horizontal Incline Decline

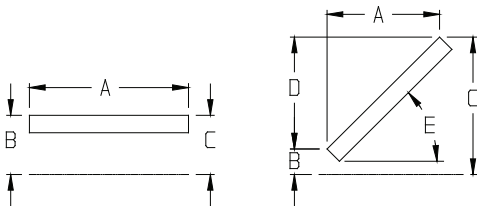
A = ___' - ___" Horizontal Overall Length

B = ___' - ___" Top of Belt

C = ___' - ___" Top of Belt

D = ___' - ___: Elevation Change

E = ___' - ___" Degree (Approx.)



- Curve: _____" Inside Radius
 Degree of Curve 45 90 180 Other _____
 Curve tangent typically (2x) the belt width. (Minimum 24")

Modular Plastic Belt Specs:

Belt Width: _____ Inches Belt Style: _____

Application Design Needs:

- Stainless Steel Wash Down Sanitary
 Other _____

Application Information:

- Product Enters By:**
 Conveyed On Fork Truck
 Robot Other _____
Product Exits By:
 Conveyed off Fork Truck
 Robot Other _____

- Quantity of Starts and Stops per Day _____

- *Will the Conveyor be started with a load??

- Yes No Soft Start Required?

Support Type:

- Legs Ceiling Supports
 None Top of Belt: _____

*Speed:

- Fixed (FPM) _____
 Variable Low Speed (FPM) _____
 High Speed (FPM) _____
 AC Speed Controller DC Speed Controller

Drive Type:

- Under Hung Shaft Mount Side Mount

Drive Location:

- Discharge End Center

Plant Voltage:

- 110V Single Phase 460V Three Phase
 220V Single Phase 208V Three Phase
 220V Three Phase 575V Three Phase

Other: _____

****Unless otherwise noted Omni Automation, LLC will assume that conveyors are fully loaded and require soft starts.***

Approval Drawing Required: Yes No